

# Rebalancing Streets for People

---

**TOOLE**  
DESIGN



*Credit: Sergio Ruiz, flickr*



*Credit: AFP via Getty Images*

# Presenters

---



**Jennifer Toole, AICP,  
ASLA**

*President*



**Jeremy Chrzan, P.E.,  
PTOE**

*Multimodal Roadway  
Design Practice Lead*



**Gwen Shaw, EIT**

*Engineer II*

# Agenda

---

- Introduction
- Rebalancing Streets for People
- Next Steps
- Questions and Answers

# Introduction

— □ ×

▼

Zoom Webinar Chat

From Me to [All panelists and attendees](#):  
Hello everyone! `Here is a similar example  
of what we did in our city:

---

To: All panelists and attendees ▼

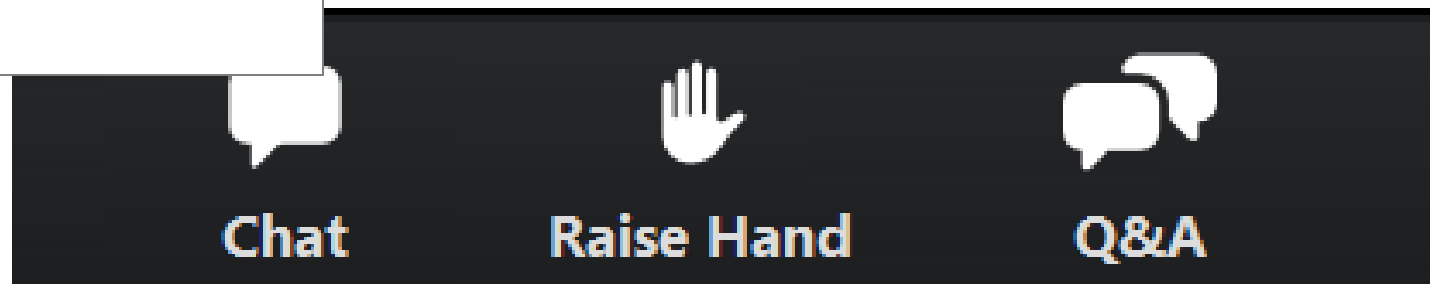
Your text can be seen by panelists and other  
attendees

What is the best thing cities can do right now to help?

☐ Send anonymously

Cancel

Send





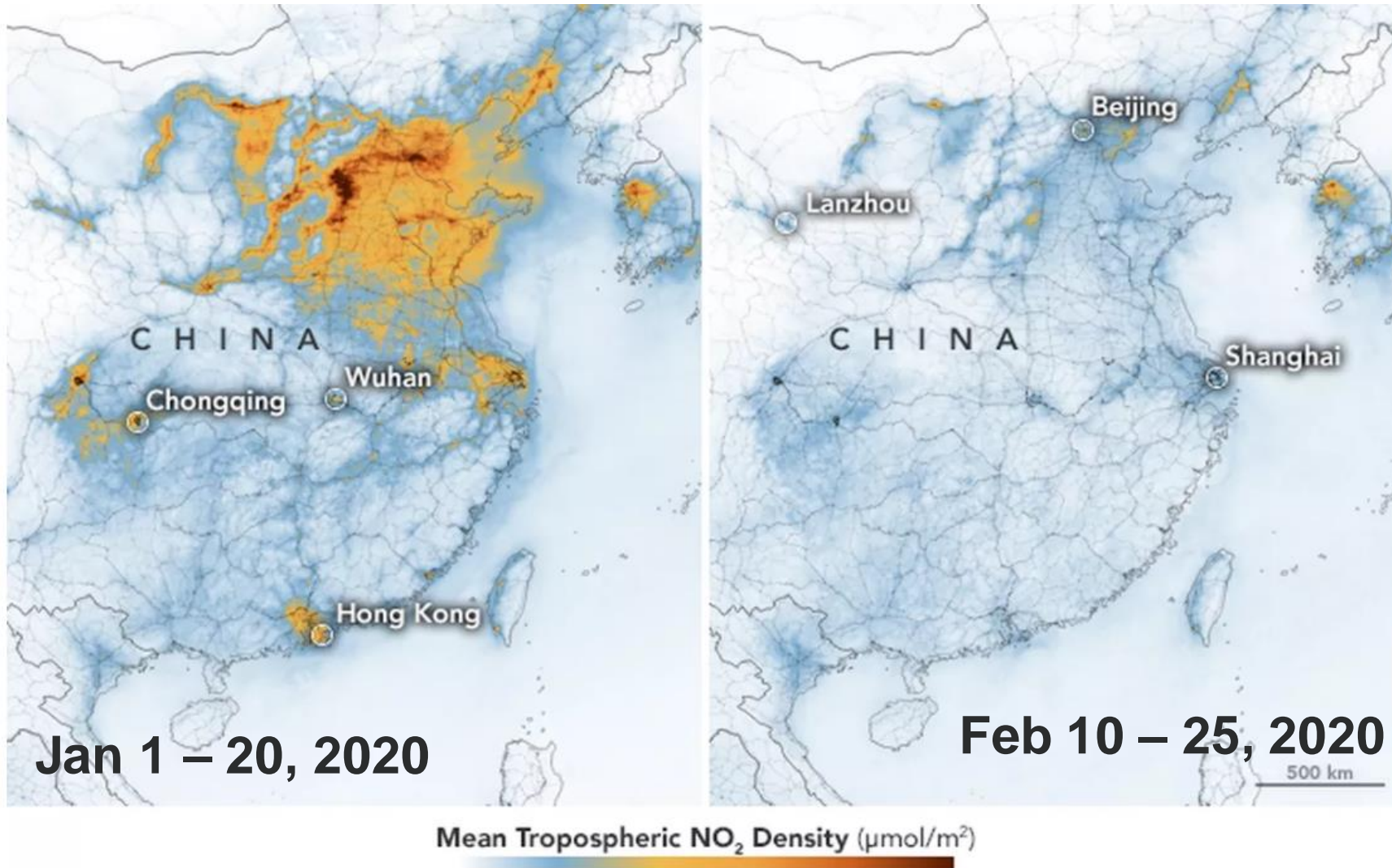
# Equity, Ethics, and Empathy

1930s 1940s 1950s 1960s 1970s 1980s 1990s 2000s 2010s

Sadly, during the last 100 years, people have become an afterthought.



It's time for change.



NASA Earth Observatory images by *Joshua Stevens*, using modified Copernicus *Sentinel 5P* data processed by the European Space Agency.







**Riding A Bike -** Not Cancelled

**Taking Hikes -** Not Cancelled

**Walking The Dog -** Not Cancelled

**Chalking Your Sidewalk -** Not Cancelled

**Enjoying The Breeze -** Not Cancelled

**Watching A Sunset -** Not Cancelled

**Let's embrace what we  
can do Outdoors**















301-634-2379  
FOR LEASE

Discovery →

NO  
TURN  
ON RED

Disco

THRU  
↑  
OBey TRAFFIC  
SIGNAL

SPEED  
LIMIT  
30

SNOW  
EMERGENCY  
ROUTE

West Traffic  
Green Light

FOR LEASE  
301 287 9111



# Minneapolis Park and Recreation Board announces riverfront parkway and road closures to help trail users maintain social distancing

West River Parkway closes between Plymouth Avenue and 11 Avenue S, one lane remains open to provide access to Stone Arch Bridge Parking Lot and 200 2nd St. S; Main Street SE closes between Hennepin Avenue and 3rd Avenue SE, one lane remains open between 3rd and 6th Avenues.



After too many people failed at social distancing over the weekend, Los Angeles County Parks and Recreation trails are being shut down, LA County Supervisor Kathryn Barger announced Monday.



A Chicago police officer blocks the road to the Adler Planetarium along Lake Michigan Thursday, March 26, 2020, in Chicago. On Thursday morning, Chicago Police began turning joggers and others away from the city's lakefront trails amid fears of the spread of the coronavirus, hours after Mayor Lori Lightfoot threatened to shut them down if people would not stop crowding the areas. (AP Photo/Charles Rex Arbogast) THE ASSOCIATED PRESS





**Daniel Paschall**  
@raschall

Thank you [@bcgp](#) and [@PhillyOTIS](#) for providing much needed breathing room in Philly on MLK Drive!



**Honkyrulespools**  
@honkyrulespools

Replying to [@stolte4ward4](#) [@Chris\\_Ariens](#) and 2 others

I am sure city staff resources are limited. Not sure if this is a priority

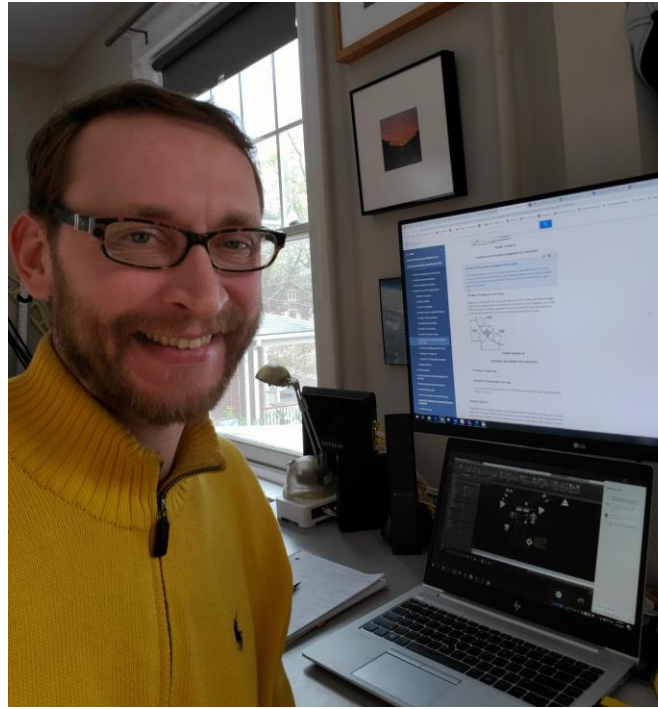
# Working from home...

---

Jennifer



Jeremy



Gwen





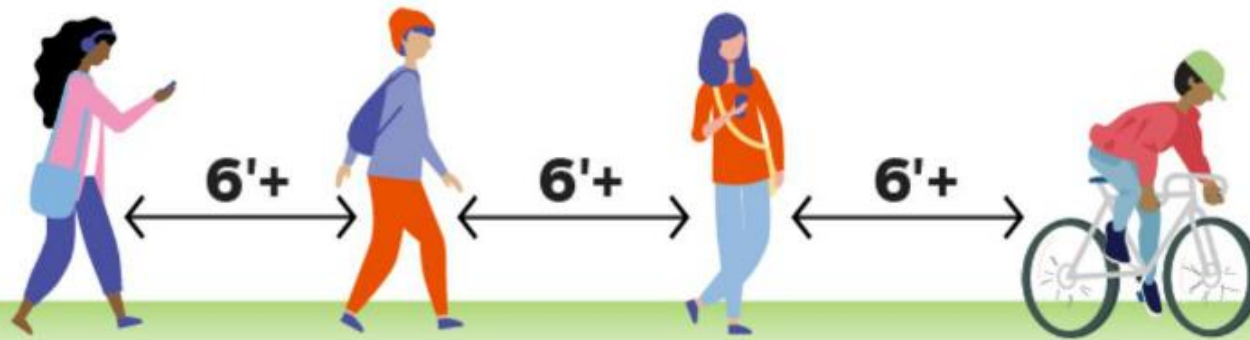
March 28, 2020

# COVID-19: Be Smart. Do Your Part.

**Sligo Creek Parkway • April, Friday to Sunday**

**Piney Branch Road to New Hampshire Avenue**

**Closed to vehicles • Open for pedestrians**



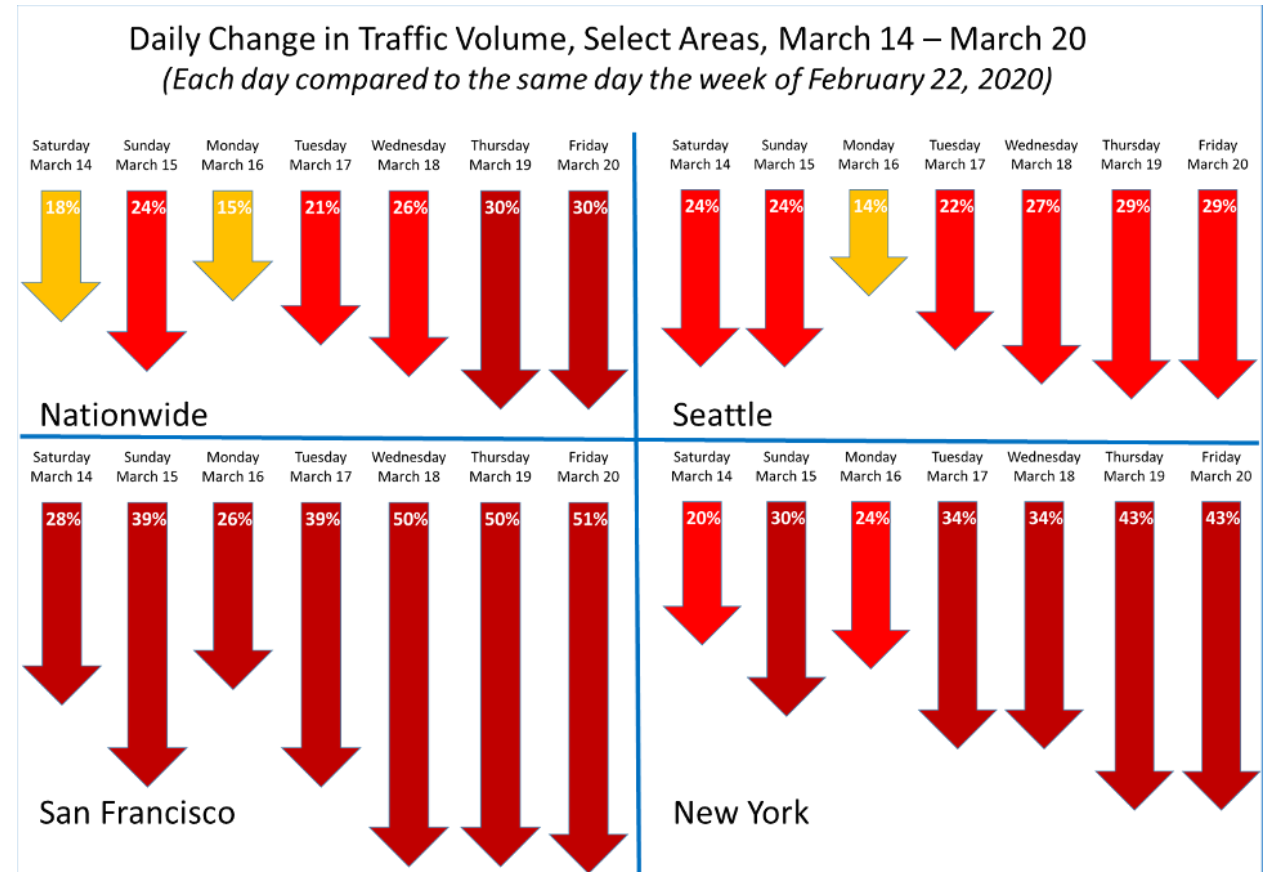
**Respect the Radius:**  
Keep six feet or more  
between you and others  
at all times.

MontgomeryParks.org



# Traffic Data Implications

- Traffic volumes are down
- Speeding is still up
- Bike crashes (in NYC) up 43% though motorist and pedestrian crashes down across the country







**Bill Schultheiss** @schlthss · Mar 27

People are walking in the streets because our society gave too much space to cars leaving sidewalks too narrow...it is time to take that space back.

[@tooledesign](#) [@SmartGrowthUSA](#)





# Lane Closures – Ideas & Considerations

---

- 4-lane roads can be reduced to 2-lane roads in the current pandemic
- Where retail is closed, can repurpose parking lanes
- Identify your inventory of existing cones, barrels, posts, or on-call contracts to supply materials
- Helps to keep vehicle speeds lower





# Lane Closures – Ideas & Considerations

- Consider at stores where people queuing on the sidewalk force people walking into the street
- Consider pop-up event locations and where you frequently do lane closures



# Lower Volume Streets – Local Traffic Only Ideas & Considerations

---

- Prioritized for people walking and biking
- Minimal cones or barricades
  - Potential for DIY closures with online permitting
- Maintain access for local trips
- An important strategy where sidewalks are narrow and parking will not be removed





# Find opportunities for parallel routes

## Ideas & Considerations

---

- Many paths are too narrow for mixed pedestrian and bicycle traffic
- Using Lane closures, attempt to separate bicyclists and pedestrians





# No Push Buttons Ideas & Considerations

- Put signals on pedestrian recall





# Other Signalization Ideas & Considerations

---

- Consider nighttime signal timing (shorter cycle lengths)
- Ensure that signals are not placed in flash
- Adjust signal timing for slower speed progression along active transportation routes

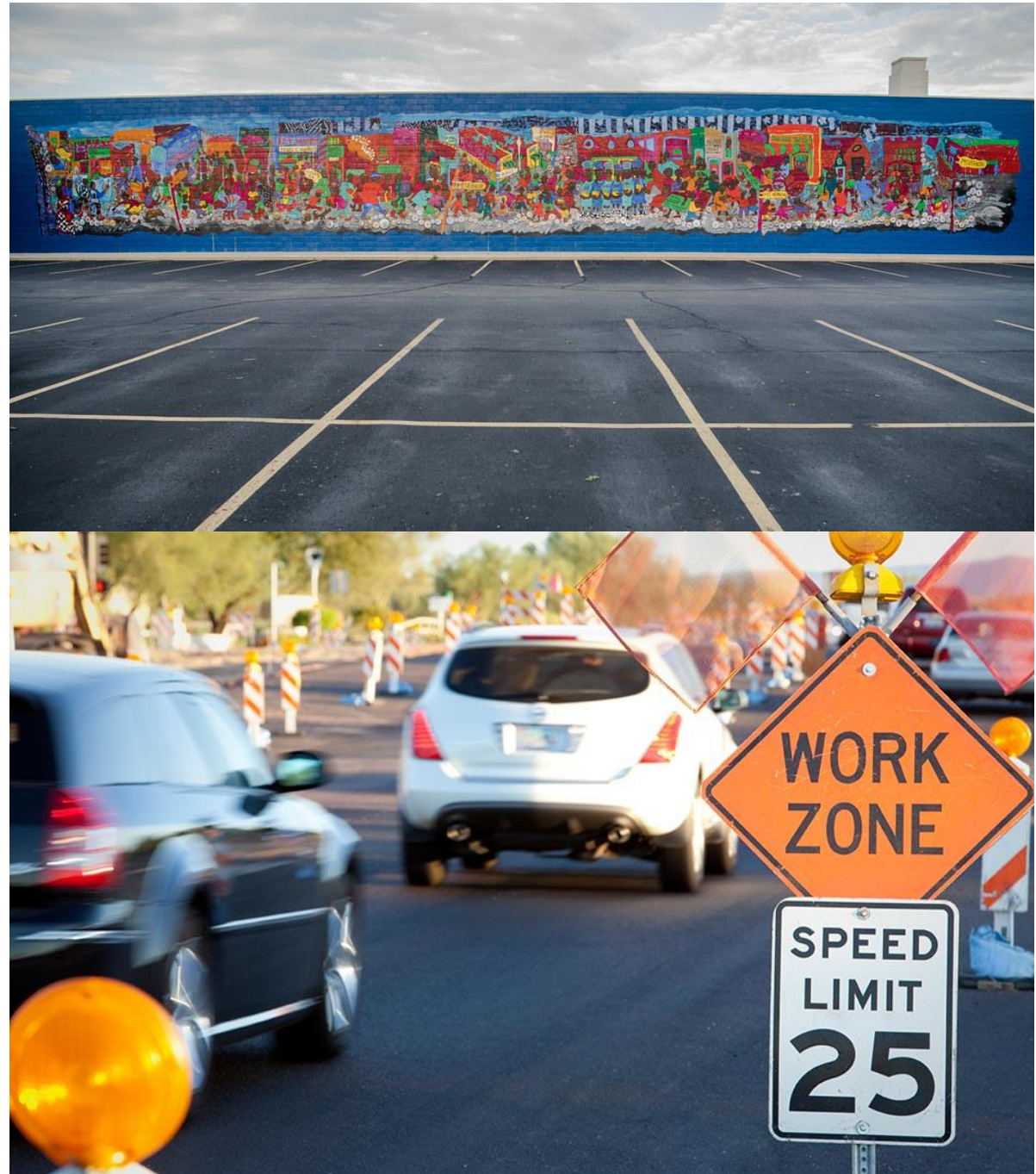




# Some other ideas?

---

- Move on-street parking to existing lots and garages to make space for walking
- Reduce speeds through 'work zones'



# Planning Considerations & Messaging

---

- Routes aren't destinations
  - intended to provide space to move, not gather
- Consider localized loops with the messaging that 1 loop is a 30-minute walk and 4 loops is a 30-minute bike ride @ 12mph
- Consider access to essential services
- Providing active transportation routes can provide space for people to disperse in parks





# Planning Considerations and Messaging

---

- Rebalance the Park Frontage Roads
- Communicate the purpose and intended operations
  - Light exercise, not time trials
  - Consider space for pedestrians



# Planning Considerations & Messaging

---

- Consider inequities
  - lower income neighborhoods less like to have yards, parking within walking distances, or tree-lined street
- Ensure active transportation routes are provided in lower income neighborhoods





# Messaging

- Think about phases of implementation, but need at least basic routes for all communities
- Provide guidance
- Seek feedback
  - hashtags to help monitor usage and identify needed changes



# Education / Messaging



**London Cycling Campaign** @london\_cycling · 3h

For key workers who need to make essential journeys by bike - we can provide live support and advice to help you cycle safely in London . Access [#LCCadvice](#) in our bio

**Back on the bike?**  
Top tips for cycling during  
the coronavirus crisis



PHONE



EMAIL



CHAT



1

20

33



**T'OOLE**  
DESIGN



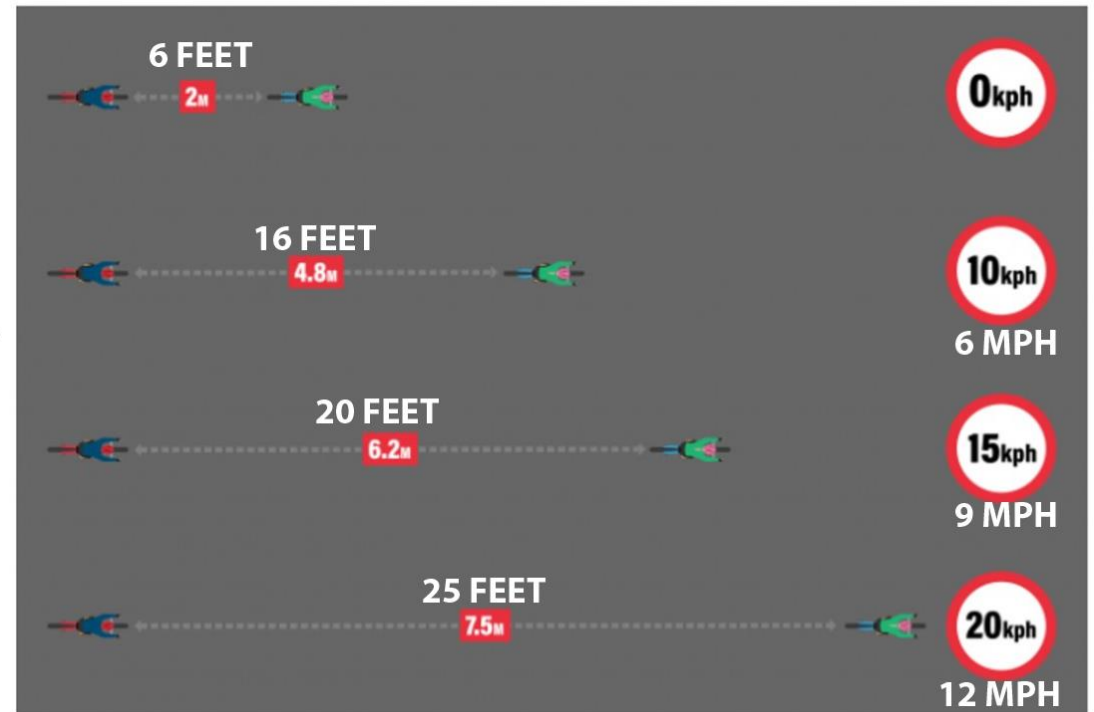
road.cc

< BACK TO NEWS

NEWS

HEALTH

RIDING



How much distance should you leave to the cyclist ahead in a time of pandemic?



# Planning for the Future

- This too shall pass, but when?
- This may be cyclical
- A return to *normal* will likely be more gradual
  - Some people may telecommute more
  - Monitor use of temporary facilities and traffic as conditions change
- Prepare for the future

## Social Distancing Might Stop. And Start. And Stop. And Start. Until We Have A Vaccine.

"We need to figure out how we are going to live in a time of plague," said one doctor.



**Dan Vergano**  
BuzzFeed News Reporter

Posted on April 1, 2020, at 4:15 p.m. ET



## The race for a COVID-19 vaccine: Fast, but fast enough?

*A vaccine within 12 to 18 months is "probably not going to happen."*



# Rapid Implementation Strategies for the Future

---

- Requires Public Engagement
- Not a complex, multi-step design process
  - Limited capital required
  - Can be done as part of resurfacing projects
- Complete networks quickly
- Support for permanent projects for the future





# Community Engagement

- How do you ensure the public has a voice in any decisions made now?
  - Transparency around decisions
  - Solicit public input
  - Apply changes consistently across communities



**AARP Livable Communities** @AARPLivable · Mar 31

An important point that highlights the value of quality open and public spaces for people of all ages, of all demographics, and in all communities. [#agefriendly](#)



**Salud America!** @SaludAmerica · Mar 31

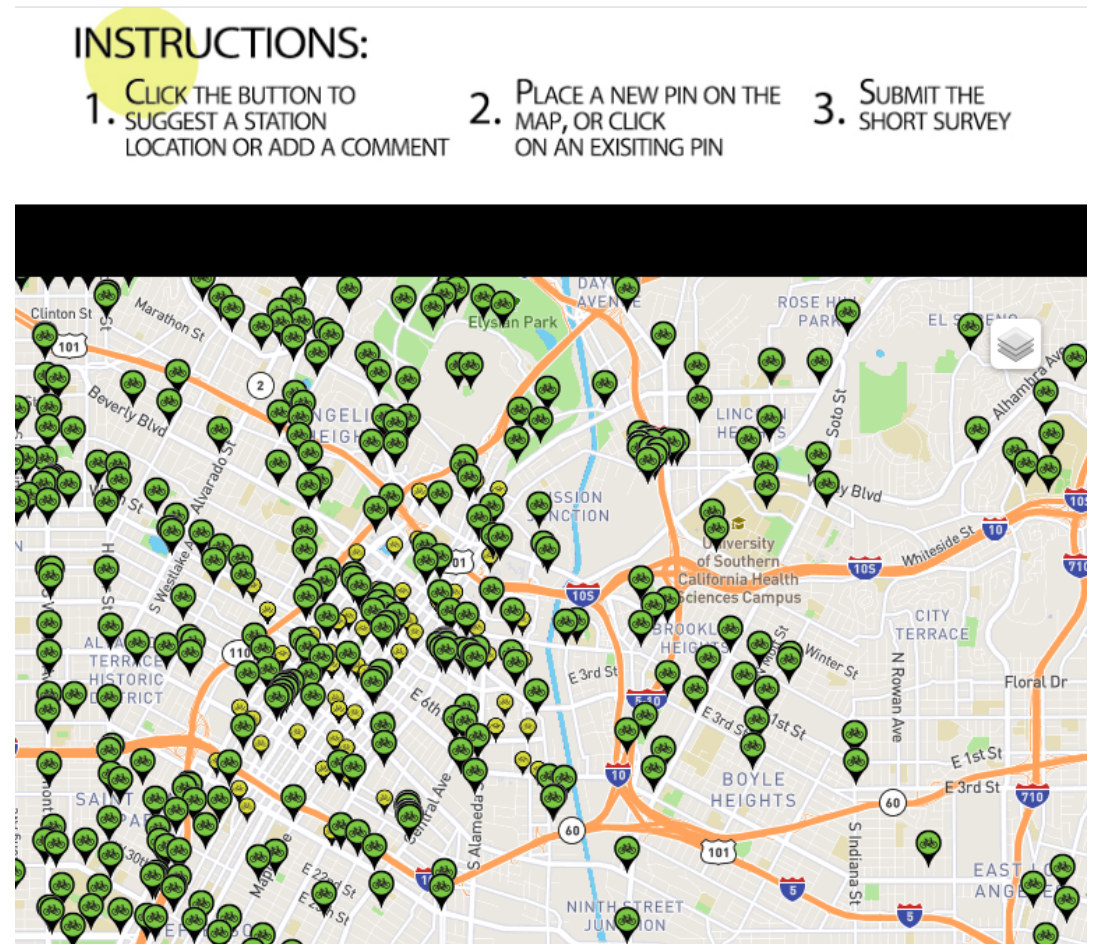
Walking and Biking Are Way Up During #COVID19, Revealing Big Inequities in Open Spaces [salud.to/covidwalk](https://salud.to/covidwalk) [#healthequity](#)





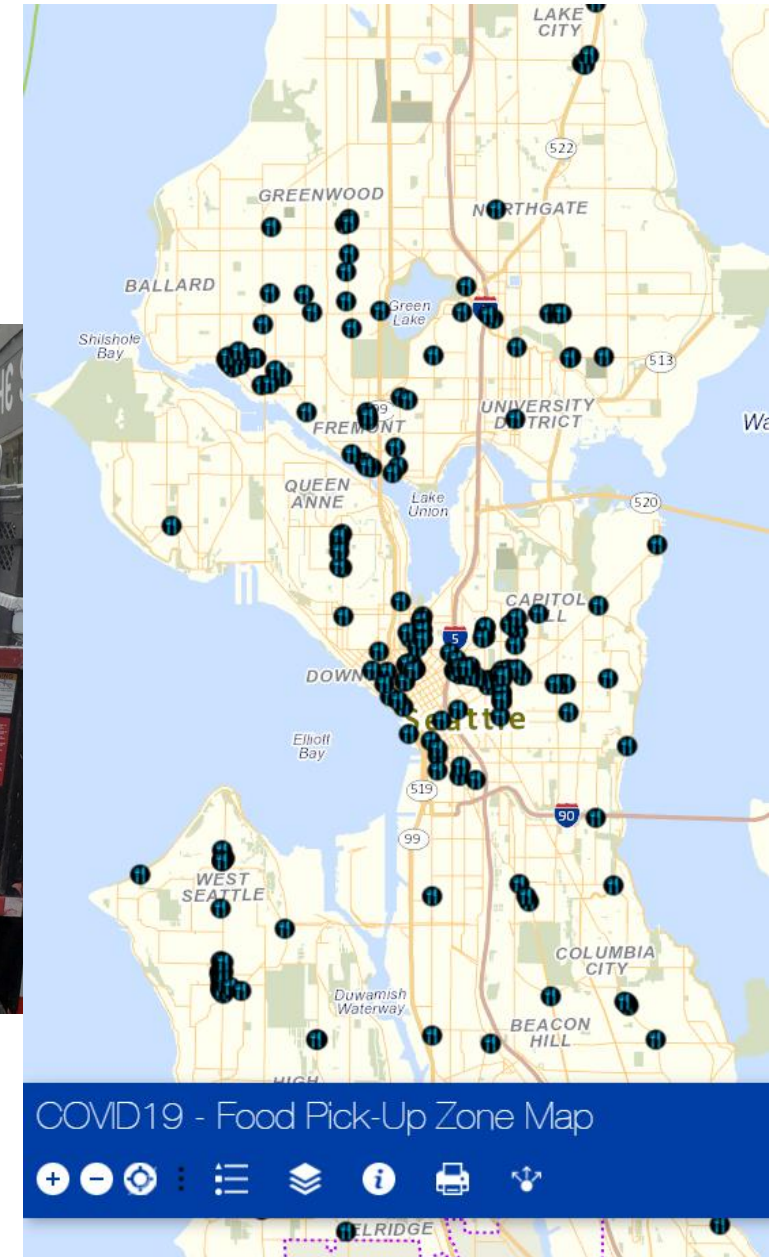
# Community Engagement Ideas & Considerations

- Set up an online map for residents and businesses to share ideas
- Identify a toolkit of treatment options possible to implement



# Community Engagement Ideas & Considerations

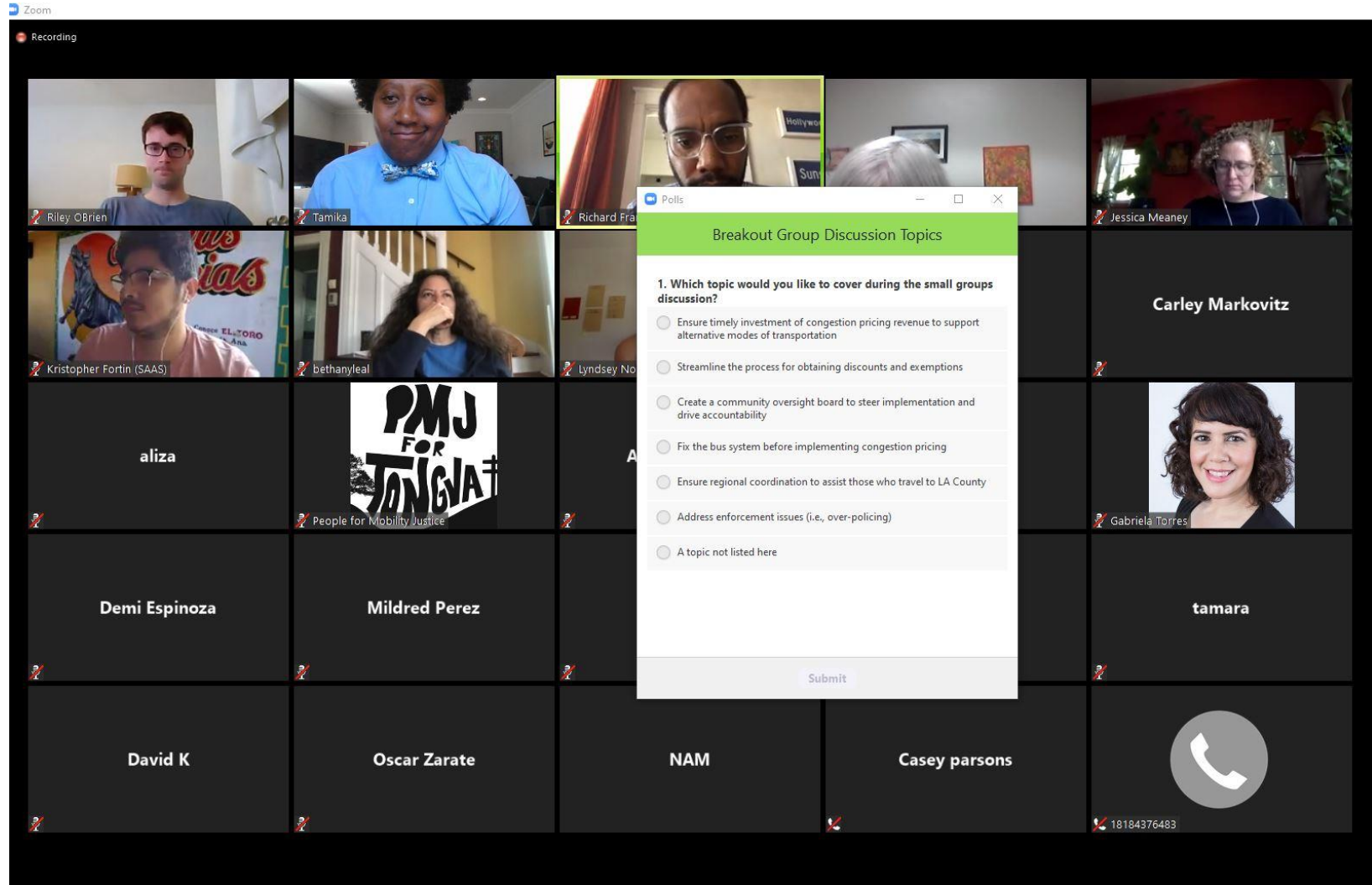
- Utilize existing data sources to evaluate and identify high demand areas needing additional space
- I.e. Converting on-street parking to pick-up only outside of restaurants





# Community Engagement Ideas & Considerations – Community Meetings

- Zoom and other tools have polling and chat features to do live engagement



# Community Engagement Ideas & Considerations – Community Meetings

- Small group breakouts allow more people to engage
- Use virtual whiteboard for live notetaking

The screenshot displays a Microsoft PowerPoint application window. The title bar indicates the file is '3. 040120 Facilitator Slide Deck\_TB\_RO'. The ribbon is set to 'Home', and the 'Font' section shows 'Roboto' at size 18. The slide being viewed is 'Slide #04' and is titled 'DISCUSSION TOPIC' with the subtitle 'Reduce over-policing of the transportation system'. The slide content includes a bulleted list:

- "Thinking Fast and Slow" – social anchoring
  - People will choose what they already know, and what they are familiar with
  - Los Angeles is a police-based city, and therefore that's what folks know
  - We need more education on problems with policing
  - It is important to explain alternatives, as safety and security are still important priorities
    - Addressing policing doesn't mean everyone running wild
  - Need to address poverty and mental health issues at the root of policing problems
- In OC and Santa Ana specifically, there are similar problems with policing
  - Police stop people walking
  - Gang injunctions lead to criminalization of people simply walking in the neighborhood
  - Many agencies get significant funding from OTS (Office of Traffic Safety at Caltrans), which encourages overenforcement
    - In Garden Grove, the city was boasting about how many people were being stopped by police
- There seems to be an uptick on policing when there are new transit users
- Beyond the policing piece, there

To the right of the PowerPoint window is a video conference interface showing a grid of participant video feeds. Visible names include 'People for Mobilit...', 'Tamika', 'Lyndsey Nolan', 'Kristopher Fortin', 'aliza', 'tamara', 'bethanyalea', 'Kyle', 'Carley Markovitz', 'Riley OBrien', 'Oscar Zarate', 'David K', and a phone icon with the number '18184376483'. A 'NAM' placeholder is also visible. The top right corner of the video feed shows 'Remaining: 00:10:18'.



# Community Engagement

## Ideas & Considerations – Keeping Projects after COVID



Toole Design Retweeted  
**PeopleForBikes** @peopleforbikes · Mar 28  
As #NewOrleans responds to the COVID-19 pandemic, the city is still moving forward on crucial infrastructure improvements to make roads safer and less stressful for everyone.



City Moves Forward on Rapid Expansion of the Bikeway Network in Algiers...  
As the City responds to the COVID-19 pandemic, New Orleans is still moving forward on crucial infrastructure improvements to make our ...  
[nolacompletestreets.org](https://nolacompletestreets.org)

# Community Engagement Ideas & Considerations – Keeping Projects after COVID

---



[Dover, Kohl & Partners](#)



# Community Engagement Resources to Adapt

---

- Precedent to look to for engagement principles
- Resources will need to be adapted



Pop-Up Diverter; Santa Monica, CA; Photo: Gary Kavanagh

# Community Engagement Resources to Adapt – Examples to pull from

---



The sign reads: "The limitless lane accommodates pedestrians, cyclists, wheelchair users, skateboarders, and other forms of non-motorized transportation and gives them their own space in the street."

Ash Crescent Limitless Lane;  
Fort Worth, TX; Photo: City of  
Fort Worth



Sidewalk Extension; Seattle, WA;  
Photo: Dongho Chang



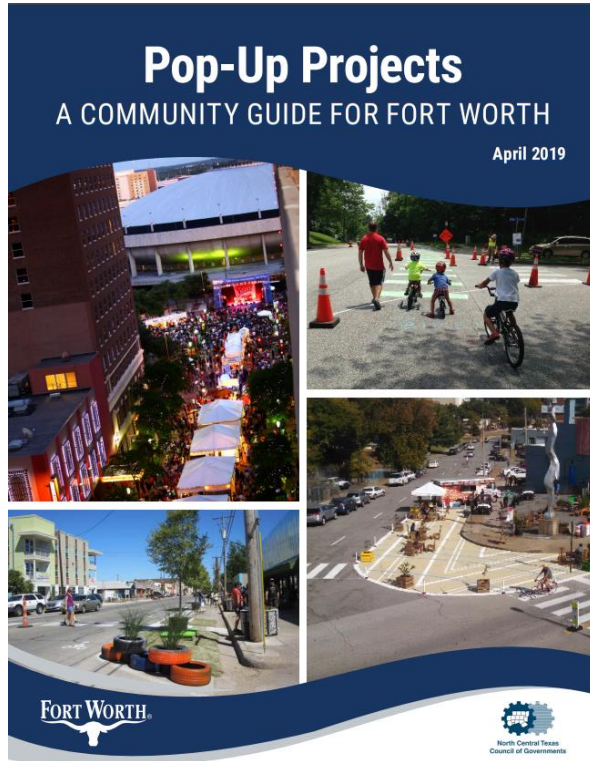
Painted Alternative Walkway;  
Portland, OR; Photo: Nick Falbo



Curb Extension Made of Tires;  
Springfield, MO; Photo: Andrew  
Jansen

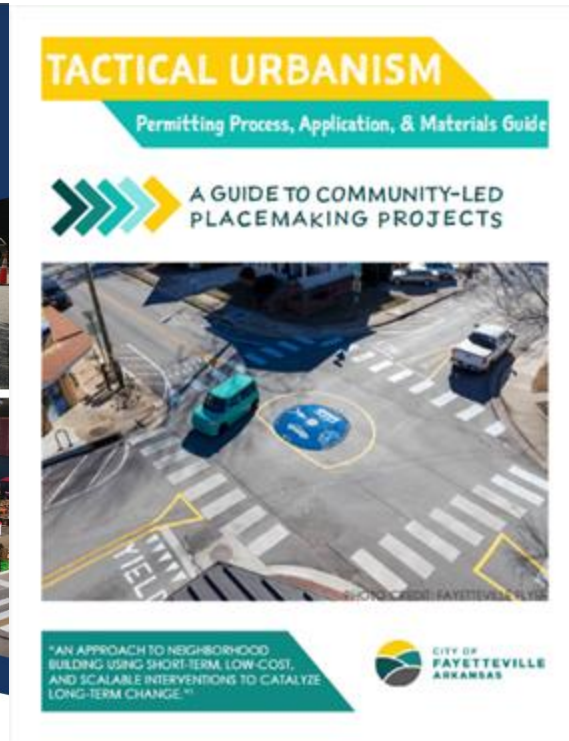


# Community Engagement Resources to Adapt – DOT and Community Guides

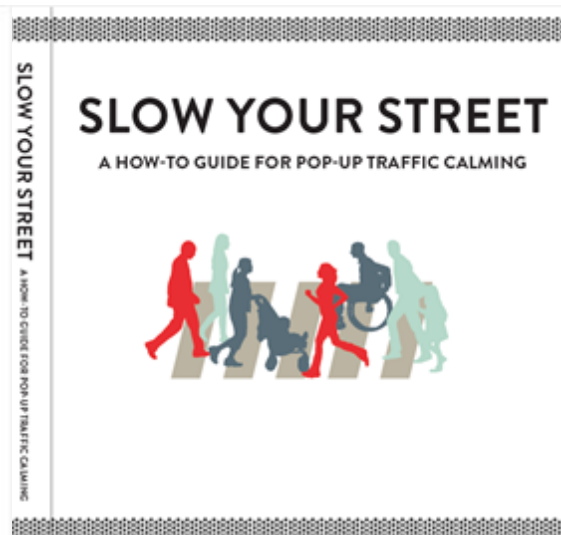


Fort Worth, TX

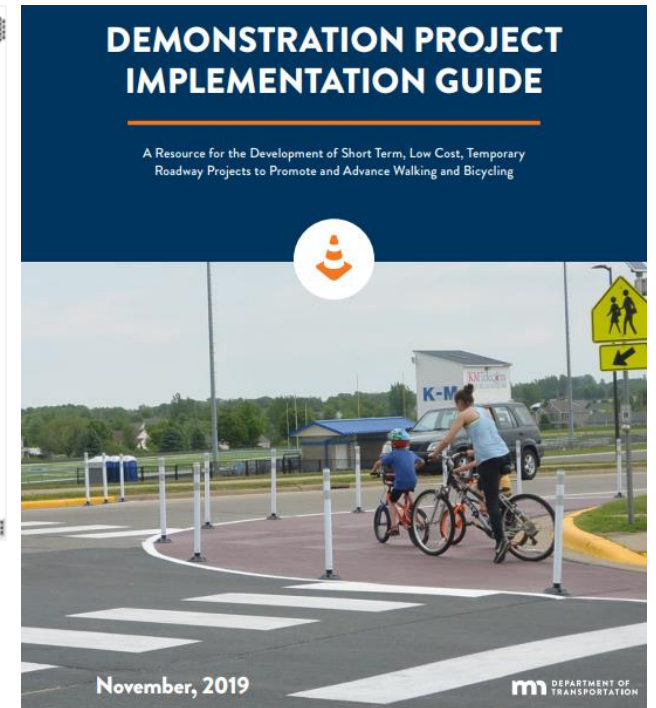
**T'OOLE**  
DESIGN



Fayetteville, AR



St. Louis, MO



Minnesota DOT

# Pulling it all together



"Twin Peaks Blvd is closed to cars and its wonderful and easy to keep your distance."  
Credit: Liam Foley  
(San Francisco)



# Pre-existing Routes

## Road Closures

These roads close at 6:30 pm:

- Dominion Boulevard at Sadler Road; through to Waterfront Place
- Waterfront Drive / Highwoods Parkway; through to Sadler Place
- Sadler Place; from Sadler Road to Cox Road
- Southbound Cox Road – from Nuckols Road to Innslake Drive
- Waterfront Place – from Cox Road to Dominion Boulevard
- Innslake Drive – from Cox Road to Sadler Road

As the last participants pass each point the Police will reopen the roads; also referred to as a rolling opening of the course.



# Think big – but also think small


---



*Credit: Brian Patterson*

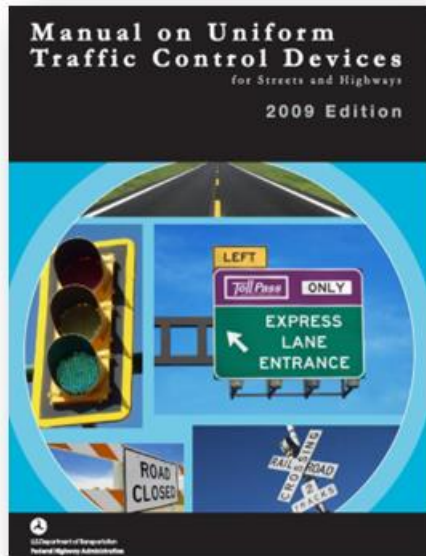


# Resources – Organizations

COVID-19: <a href="#">Transportation Response Center</a>						
 National Association of City Transportation Officials						
<a href="#">About</a> <a href="#">Programs &amp; Initiatives</a> <a href="#">Guides &amp; Publications</a> <a href="#">Events &amp; Trainings</a>						
NACTO: Transportation Actions Updates						
Lane County	OR	US	Bus	Maintenance & Cleaning, Rear-door Boarding, Fare Suspension, Service Changes	Lane Transit District (LTD) takes COVID-19 precautions	3/30/2020
London		United Kingdom	Car, Bikeshare	Congestion Pricing Suspension, Free Bikeshare	TfL suspends all road user charging schemes to help critical workers	3/23/2020
London		United Kingdom	Bus	Fare Suspension, Rear-door Boarding	COVID-19: Bus rides are free till April 5, but use the back door, London Transit says	3/19/2020
Long Beach	CA	US	Bike	Bikeshare Suspension	To further the City's efforts to reduce the spread of #COVID19, Long Beach BikeShare service has been suspended until further notice.	3/30/2020
Los Angeles	CA	US	Walk	Crossings	@MayorOfLA just announced that beg buttons are being disconnected in pedestrianized areas to provide automatic walk buttons.	3/30/2020
Los Angeles	CA	US	Bus	Service Changes	L.A. Metro rail and bus services will continue to run, some schedules will be adjusted to reflect the reality of the decline in ridership. L.A.	3/23/2020
Los Angeles	CA	US	Bus	Fare Suspension, Rear-door Boarding	LADOT DASH Begins Free Service, Backdoor Boarding to Assist Riders During COVID-19 Crisis	3/23/2020
Madison	WI	US	Transit	Service Changes, Crowding Mitigation, Fare Suspension	COVID-19 Updates	



# Resources – Materials



Online learning opportunity! @USDOTFHWA has launched a free course on bikeway planning and selection.



FHWA Launches Online Bicycle Facility Design Course - Toole Design  
If you are interested in learning more about the planning and design of bicycle facilities and have a little extra...  
[tooledesign.com](https://tooledesign.com)

- MUTCD – Part 6: [Temporary Traffic Control](#)
- Tactical Urbanism [Guide](#) to Materials and Design
- Bicycle Facility Design – new [online course](#) from FHWA





# Thank you

---

[www.tooledesign.com](http://www.tooledesign.com)

[jtoole@tooledesign.com](mailto:jtoole@tooledesign.com)



[@tooledesign](https://twitter.com/tooledesign)